

Asset Integrity Manager TM v4

Asset Integrity Manager (AIM) is the core application of IONIK’s product suite. AIM is used to create and maintain the asset, inspection and anomaly database for AIM 4-Site, Inspection Manager, Asset Integrity Manager for the Web, IC-GIS and IC-Video.

AIM provides a powerful Asset Register and framework for managing information for any asset type or inspection methodology.

Benefits

AIM offers operators the following benefits:

- Optimization of spending through forward planning and scheduling
- Instant access to information eases compliance auditing and assurance

Flexibility

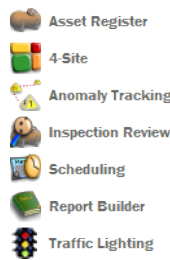
AIM allows users to:

- Configure asset information groups to capture information for a wide range of asset types and data sources
- Review inspection scenarios, changing parameters, changing inspection programs, and changing damage modes.

Overview

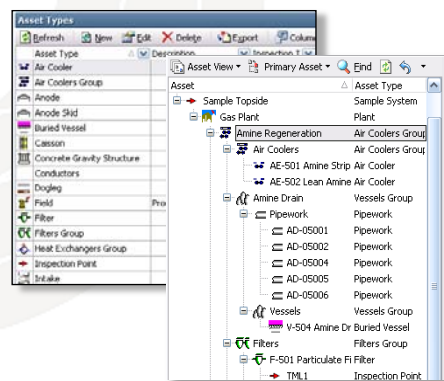
AIM is the framework on which the functionality for managing the integrity of assets is based.

AIM has optional modules, such as 4-Site, described in other technical briefs.



Asset Register

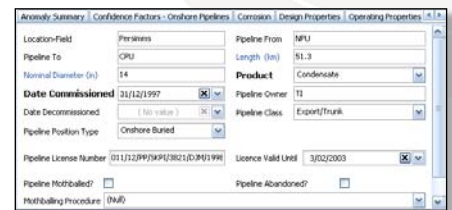
AIM’s central feature is its very flexible, user-customizable Asset Register. The Asset Register caters for assets of all types such as topside, offshore or subsea, with no limitations on quantity of asset information data or complexity of the asset hierarchy.



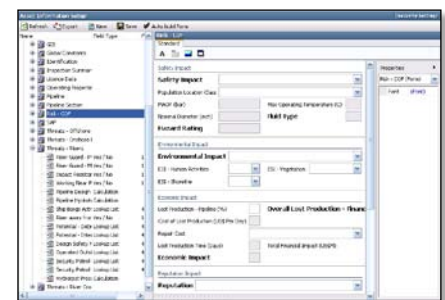
Users can create Asset Information Groups that contain asset information fields on forms formatted to uniquely suit the needs of the each organization. Information can include customized lookup lists, dates, numbers, text, graphical lookups and more.

Asset Information

Asset information fields can also be live calculations using data from other fields such as MAOP, wall thickness, hazard levels and corrosion rates.



Commissioning is made easier and faster with support for bulk population and update of information from Microsoft Excel™.



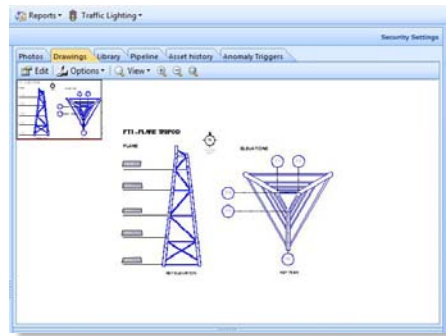
Asset Information Inheritance

Asset information for one asset can be inherited from another. This significantly reduces data entry for information that is common among like assets.

Inherited information can be over-ridden to cater easily for a specification changes due to replacement or repair.

Asset Library

AIM's electronic library allows storage of or linking to reports, documents, photos, drawings, and P & ID's. Links are used to reference documents in an existing corporate document control system.



Users can maintain a graphical and photographic record of complex subsea assets to assist with subsea inspection. Users can mark-up drawings to provide easy navigation of the asset hierarchy tree.



Additional reference drawings can be attached as library items and baseline data can be stored and displayed for pipeline or other forms of linear assets.

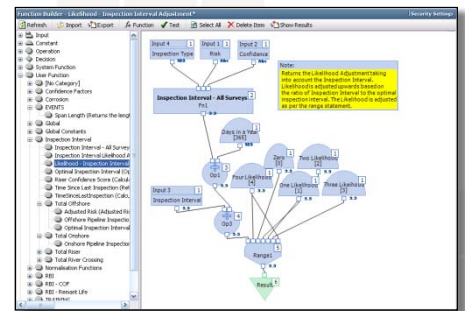


Function Builder

AIM's function builder is a powerful visual tool which provides the means to create and maintain functions of any complexity.

Functions can then be referenced in Asset Information fields and/or Risk Models. Functions can also be referenced from within other functions to create highly complex calculations.

They can be built with a range of standard mathematical, statistical and logical operators, system functions or in-built database function objects.



These function objects can be used to create lookup tables, multi-array lookup tables, logical tests, range tests and more. All functions can be viewed with context specific data for auditing purposes.

Scheduling

Scheduling provides a visual view of historical and planned works, inspection or maintenance campaigns.

Task Name	Start	End	Status
Task 1	2010-01-01	2010-01-15	Completed
Task 2	2010-01-15	2010-02-01	In Progress
Task 3	2010-02-01	2010-02-15	Planned

Tasks in schedules can be quickly generated from incomplete anomaly actions and historical schedules.

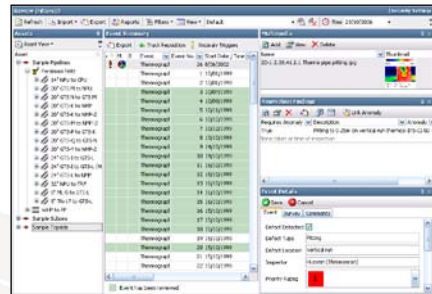
Planning templates allow the rapid creation of multi-period repeating schedules.

Inspection Data

Use Asset Integrity Manager to store inspection or survey data recorded against the assets in the database.

AIM allows complete user-definition of events to ensure data compatibility to company requirements.

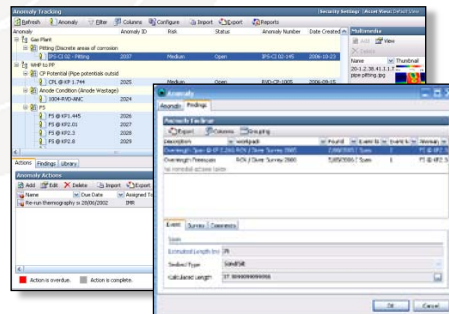
Inspection data can be captured on-line using IONIK's "Inspection Manager" application or bulk imported from Microsoft Excel™.



The inspection data can be fully integrated with external digital video systems such as IONIK's new IC-Recorder and earlier DVR products, NETmc's DVRi and VisualSoft's Visual Works for review and analysis.

Anomaly Tracking

This comprehensive tool allows management of anomalies from initial discovery through to close-out and over any number of surveys in between.

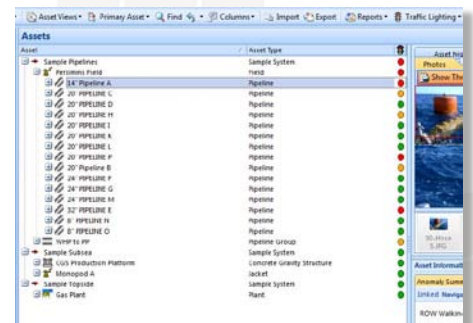


'Actions' can be created for investigation, close out and responsibilities for these can be assigned to departments, contractors or individuals and can be added as tasks to future workpacks.

Anomaly categories, codes, priority ratings, discovery checklists and status levels can be configured to suit existing practice.

Traffic-Lighting

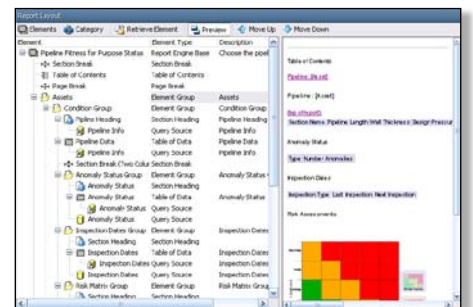
A secondary traffic-lighting system is available on the basis of anomaly assessment which can be highlighted with a traffic-light against each level in the hierarchy down to the individual component assets.



Marked-up drawings will also show highlighting based on anomaly assessment.

Reporting

The reporting engine provides the end-user with a powerful tool to create dynamic report templates which are then exported to HTML or Microsoft Word™ format.



Report templates are categorized and available from other areas in the software.

Technical Specifications

Software Requirements:

Database: MS SQL Server 2005 (with Service Pack 2)

Client Operating System: MS Windows XP (SP3) or MS Windows Vista, Windows 7

Other: HASP HL drivers

Minimum Hardware:

Processor: Intel Core 2 Duo, 2GHz

Memory: 1GB RAM

Hard Disk: 30GB

Video Resolution: 1280x1024 (dual monitors are recommended)

Digital Video System Compatibility:

IONIK's IC-Recorder (and earlier Digital Video Recorder products)

NETmc's "DVRi"

VisualSoft's "VisualWorks"

Asia-Pacific

5th Floor
432 Murray Street
Perth, WA 6000
Australia
Telephone: +61 8 6314 2400
Facsimile: +61 8 9226 1424

Europe & Middle East

Caledonian House
234 Union Street
Aberdeen AB10 1TN
Scotland
Telephone: +44 1224 347 300
Facsimile: +44 1224 347 301

The Americas

15115 Park Row
3rd Floor
Houston Texas 77084
USA
Telephone: +1 281 675 1000
Facsimile: +1 281 646 9827