

4-Site

Risk Assessment & RBI Management For Asset Integrity Manager™ v4

4-Site adds powerful Risk Assessment and Risk Based Inspection functionality to IONIK's leading Asset Integrity Manager (AIM) software.

4-Site provides user-customizable and configurable modeling capabilities for the assessment of risk, health and safety for pipelines, structures, process plants and other critical assets.

Benefits

4-Site adds the following benefits to AIM:

- Risk assessments clearly show which assets are in immediate need of attention
- Allows optimization of spending through forward planning and scheduling
- Instant access to information eases compliance auditing and assurance

Flexibility

4-Site allows users to:

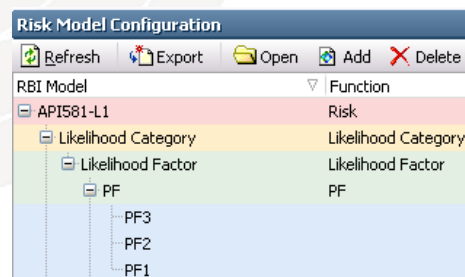
- Utilize a range of risk assessment and RBI methodologies (e.g., API 581 BRD, DN-RP-G101, AS2885.1)
- Create or modify risk assessment methodologies for specific situations, asset types, damage mechanisms or priorities
- Review risk based on inspection scenarios, changing parameters, changing inspection programs, and changing damage modes.

Model Configuration

4-site has a flexible and powerful framework designed for easy configuration of Risk Models and analysis for Risk Assessments.

4-Site caters for any system; whether it is a physical asset or grouping of assets such as Process Unit, Corrosion Loop, pressure or structural equipment, or a management system such as a Job Step.

Risk models can be applied at any level of the asset hierarchy and for any type of component such as tanks, pipelines, pressure vessels, heaters, PSVs, valves, flanges, piping, subsea equipment, and structures.

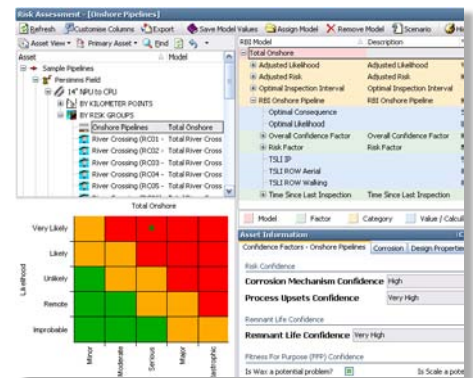


4-Site can use formalized risk assessment and RBI methodologies such as API 581, DN-RP-G101, AS 2885.1, AS 4360 or customized risk models of any level of complexity.

Qualitative or quantitative corporate risk models, internally determined models, or tailored models to suit specific issues or situations can be used.

Risk Assessment

Any risk model can be assigned to any asset, structure, component, item or system.



Models can be applied to levels or asset views within the hierarchy of assets. Models can be swapped out and compared in order to review the effect of changing models on resultant risk levels. Risk can be reviewed based on inspection scenarios, changing parameters, changing inspection programs, and changing damage modes.

The Library allows quick access to key reference material such as reports, historical Risk Assessments, inspection summaries, drawings, specifications etc.

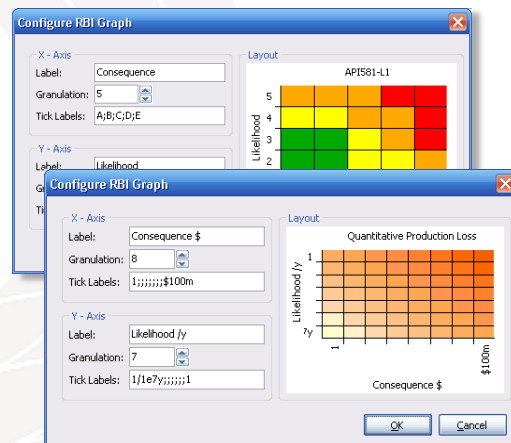
Risk assessments can be exported as reports as a permanent, documented record for auditing or external use.

Risk assessments can be configured to draw source data from the asset and inspection database containing monitored information, material details, equipment design parameters, event details, inspection records, scheduled inspections, and so on.

'What-if' analysis can be performed by scenario creation through which the effect of changing parameters and implementing control measures can be seen in advance.

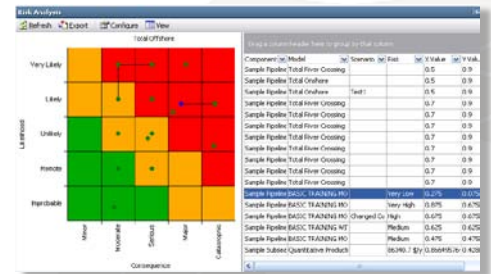
Risk Analysis

Risk analysis outputs can be custom-defined for plotting on using different risk scales or corporate matrices.



Risk assessments for multiple risk models and multiple scenarios can be reviewed on a single matrix graph.

Both qualitative and quantitative risk plots can be mapped and analysed.

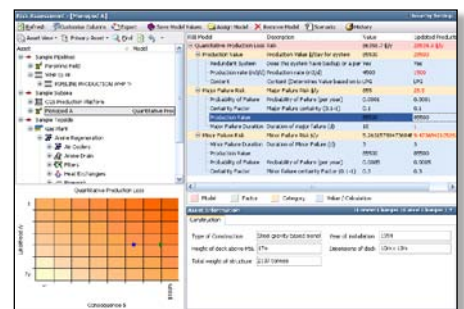


Full sorting and filtering capabilities are available for analysis based on asset hierarchy, risk model type, risk, consequence likelihood, and scenarios.

Scenarios

The ability to apply various scenarios allows side-by-side changes to be made to the values within a risk model.

The effects of changes to risk outcome can therefore be easily demonstrated by modifying operational parameters (e.g. change in inspection philosophy to increase inspection frequency).

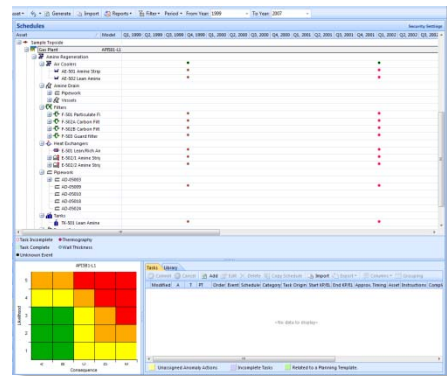


The ability to apply various scenarios allows side-by-side changes to be made to the values within a risk model.

4-Site provides a valuable visual tool for presentations of changing risk philosophy and a simple means to see the effect of applying new technologies to a risk model.

Schedule Management

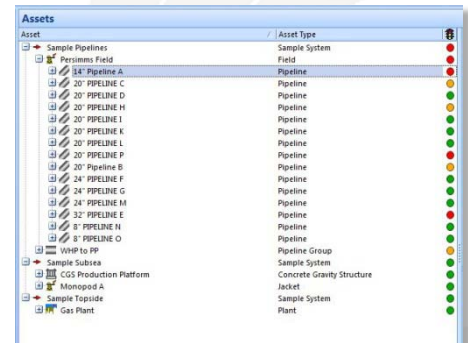
Risk models can generate a recommended inspection frequency for each inspection type. The inspection frequency can be used to automatically generate future schedules and worksopes.



The direct link between risk assessment and inspection planning means that adjusting a schedule's dates will result in an immediate visible movement of risk shown in the matrix.

Traffic-Lighting

Risk assessment based on cumulative hierarchical risk can be highlighted with a traffic-light against each level in the hierarchy down to the individual components.



A secondary traffic-lighting system is available on the basis of anomaly assessment rather than risk.

Risk rollup

Risk rollup allows users to also configure a risk calculation for an asset that includes the risk from all of its children. The calculation is configured in the function builder using the RiskRollup function which can return the aggregate of the risk for all the children of that asset. Users can specify the type of aggregation to use.

Technical Specifications

Software Requirements:

Database: MS SQL Server 2005 (with Service Pack 2)

Client Operating System: MS Windows XP (SP3) or MS Windows Vista, Windows 7

Other: HASP HL drivers

Minimum Hardware:

Processor: Intel Core 2 Duo, 2GHz

Memory: 1GB RAM

Hard Disk: 30GB

Video Resolution: 1280x1024 (dual monitors are recommended)

Asia-Pacific

5th Floor
432 Murray Street
Perth, WA 6000
Australia
Telephone: +61 8 6314 2400
Facsimile: +61 8 9226 1424

Europe & Middle East

Caledonian House
234 Union Street
Aberdeen AB10 1TN
Scotland
Telephone: +44 1224 347 300
Facsimile: +44 1224 347 301

The Americas

15115 Park Row
3rd Floor
Houston Texas 77084
USA
Telephone: +1 281 675 1000
Facsimile: +1 281 646 9827